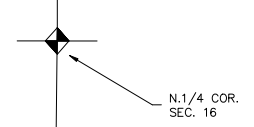


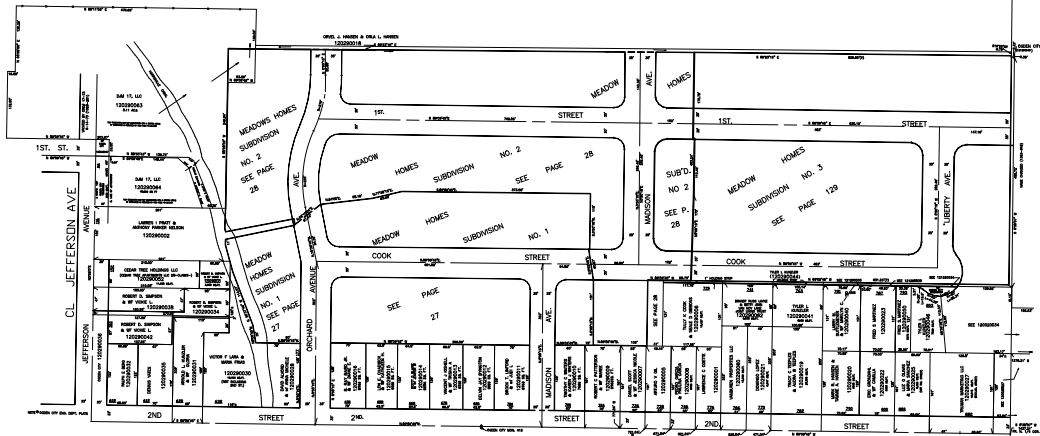
TAXING UNIT: 25

PART OF N.W. 1/4 OF  
SECTION 16, T.6N., R.1W., S.L.B. & M.  
IN OGDEN CITY  
SCALE 1" = 200'



SEE PAGE 21

SEE PAGE 22



SEE PAGE 2

SEE PAGE 30

SEE PAGE 30-2

SEE PAGE 21